



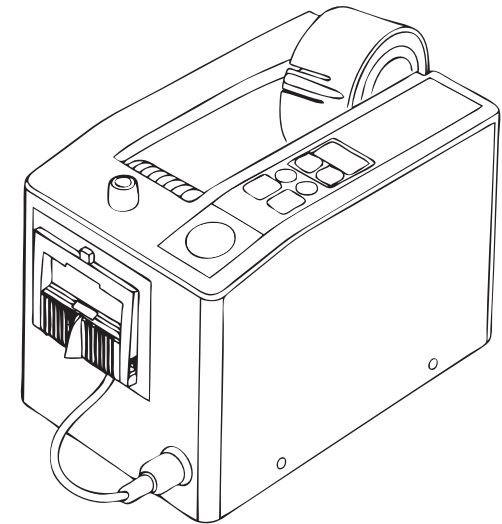
**02 9452-3566**

**sales@getpacked.com.au**

Auto Tape Dispenser

**M-1000**

## Instruction Manual



Thank you very much for purchasing  
"Auto Tape Dispenser".

Please read this instruction manual  
before using or when it's necessary.



A family  
owned  
Australian  
business

# Contents

1 Notice	1.1 ⚠ Warning	11
	1.2 ⚠ Caution	12
2 Description of parts and function	2.1 For M-1000	13
3 Operation	3.1 Setting up	14
	3.2 Loading tape	14
	3.3 Sets tape length	15
	3.4 Resets saved length	15
	3.5 Using automatic feed	16
	3.6 Using manual feed	16
	3.7 Changing tape	16
	3.8 How to remove jammed tape	17
4 Maintenance	4.1 Replacing separating roller unit	17
	4.2 Maintenance of cutter blades	18
	4.3 Replacing cutter and cutter liner	18
	4.4 Replacing fuse	19
5 Specifications		19

## 1 Notice

### 1.1 ⚠ Warning

**Do NOT insert your fingers into cutting head.**



### 1.2 ⚠ Caution

**Do NOT put flammable onto the unit.**

**Do NOT use the unit under unsteady place.**

**Do NOT use the unit in humid or dusty place.**

**Do NOT disassemble or modified the tape dispenser.**

**Make sure to pull the plug out when the unit is moved or replacing parts.**

**Do NOT insert bars or plates in to the tape outlet. This will damage blades.**

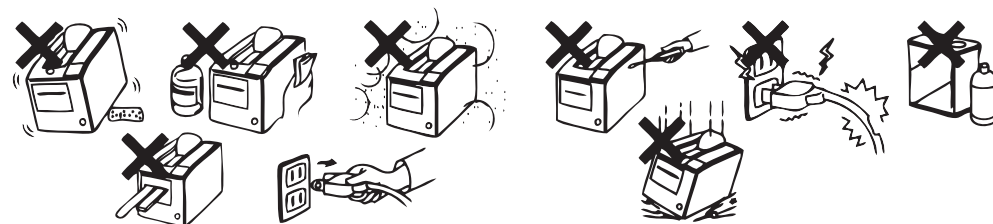
**Do NOT drop the unit or subject it to heavy shocks.**

**Do NOT use volatile liquids (thinner, benzene, etc.) to clean the unit. Wipe with dry cloths only.**

**Do NOT use damaged cable. This may cause a fire or electric failure.**

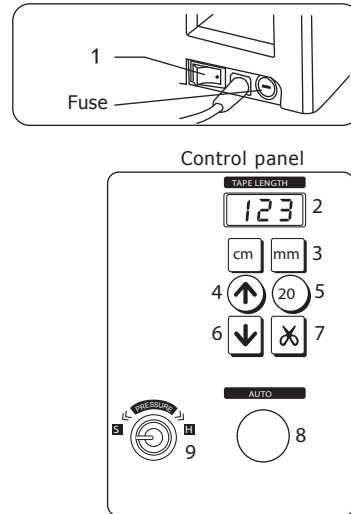
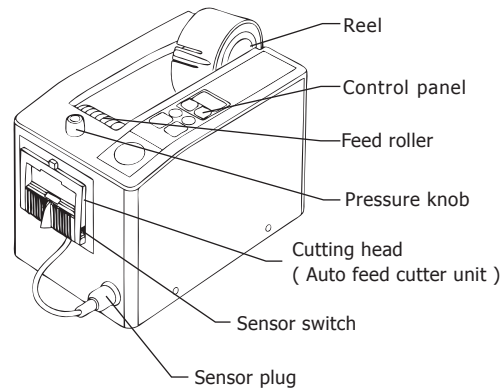
**Do NOT use the unit near volatile liquid.**

**Do NOT use power other than set voltage. = a) 100V b) 110-117V, c) 220 - 240V**



## 2 Description of parts and function

### 2. 1 For M-1000



1 Power switch	Press to turn power ON or OFF.
2 Tape length display	Shows tape length and error.
3 Length adjustment key	The last digit indicates " mm " (0 - 9mm) and the first two digits " cm " (20 - 990mm).
4 Reverse key	Feed roller reverses by pressing  . Use this key for changing tape.
5 20(reset)key	Resets length display reset and back to min set length of 20mm.
6 Feed key	Tape dispenses as long as  is pressed.
7 Cut key	Press  to cut tape.
8 Auto Key	Press AUTO to feed tape to the preset length and cuts automatically.
9 Pressure knob	Adjust press ( top ) roller to change pressure on tape.

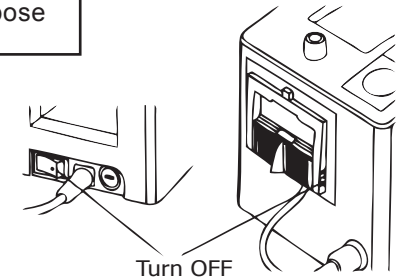
## 3 Operation

### 3. 1 Setting up

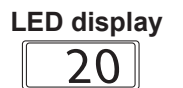


Make sure power and sensor switches are OFF for safety purpose

- ① Plug sensor plug into the unit.
- ② Plug power cord in.
- ③ Turn the power switch ON.

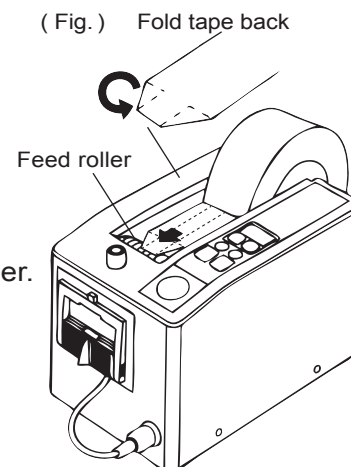


Min set length of 20 will be shown on the LED display.



### 3.2 Loading tape

- ① Pull the reel out from the unit.  
Load tape on the reel and place to the unit.
- ② Make sure to position the tape on the center of the reel.
- ③ Fold corner of the tape to form a trapezoid shape ( Fig. ). Stick the tape onto metal feed roller.
- ④ Press " " until tape feeds through cutting head.



⑤ Adjust “Pressure knob” in accordance with tape.

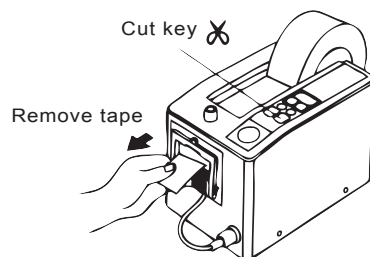
- If tape curls up or slips, increase pressure.( clockwise )
- If tape creases, decrease pressure.( counter clockwise )



⑥ Advance 3cm - 4cm of the tape out from the cutting head.

⑦ Press “ ✂ ” to cut the tape.

⑧ Remove tape



### 3.3 Sets tape lengt

Make sure sensor switch is OFF.

Press “ mm ” and “ cm ” for setting length.

① Press “ mm ” to set length of 0-9mm( Last disit )

② Press “ cm ” to set length of 20 -990mm

LED display

20

↓ mm

27

↓

27

↓ cm

457

\* Keep pressing button for quick change.

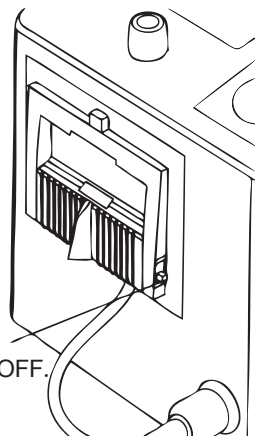
\* Last setting length is saved even main power is turned OFF.

### 3.4 Resets saved length

Press “ 20 ” to reset and back to min set length of 20mm.

20

Make sure sensor switch is OFF.



### 3.5 Using automatic feed

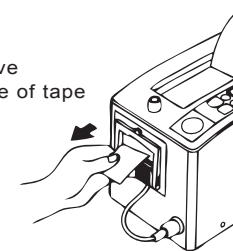
① Turn sensor switch ON.

② Tape will be fed set length and cut.

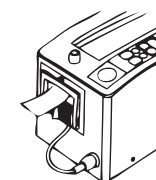
③ Remove a piece of tape from machine

④ Another piece will be fed and cut.

Remove a piece of tape



Automatically set length is fed and cut



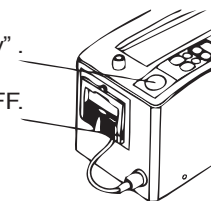
### 3.6 Using manual feed

① Turn sensor switch OFF.

② Press “ AUTO ”.

③ Whenever “ AUTO ” is pressed, set length is fed and cut.

Press “ Auto key ”.  
Turn sensor switch OFF.

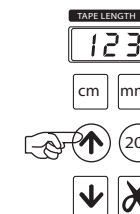


### 3.7 Changing tape

① Turn sensor switch OFF.

② Press “ ↑ ” to reverse tape.  
The feed roller will rewind the tape away from cutter area.

③ Remove whole reel out from the unit and replace tape.



### 3.8 How to remove jammed tape

- ① Press “ ↑ ” to reverse tape.  
※ Hold the tape and wind it backward slightly as per ( Fig. ) .

- ② Remove tape from metal roller.
- ③ Cut wrinkled part of tape.

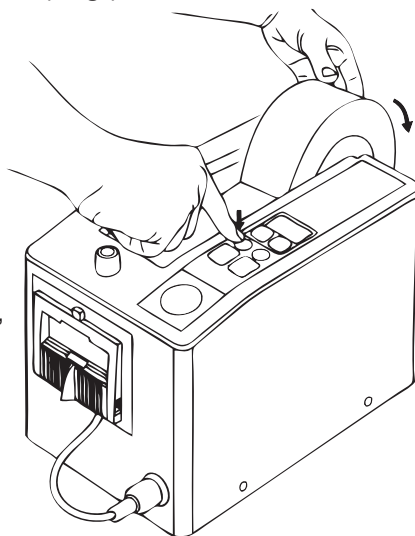
#### ● In case of heavy tape jam.

- ① Remove cutting head from the unit.
- ② Cut wrinkled part of tape.
- ③ Remove jammed tape by tweezers.  
※ In case tape is wrapped around any rollers, those need to be cut by scissors.  
Make sure roller wouldn't be damaged.

#### ● If tape jammed in the cutting head.

- ① Remove cutting head from the unit.
- ② Check the gap of the blade on the back.
- ③ Remove jammed tape by tweezers.  
※ When its heavy jam, cutter spring need to be removed.  
See details for page 18.

( Fig. ) Wind the tape backward slightly



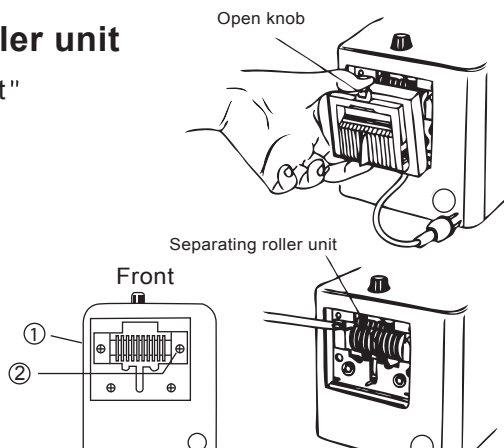
## 4 Maintenance

	<b>Caution</b>	For safety reason, make sure to pull power cord out from power outlet for any maintenance.
	<b>Caution</b>	Do NOT touch cutter blade!

### 4. 1 Replacing separating roller unit

Rubber rings on "Separating roller unit" are consuming part. Regular replacement is required the best feeding condition.

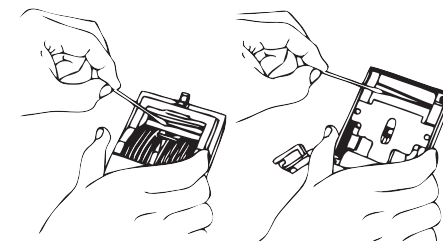
- ① Remove cutting head.
- ② Unscrew ① and ②.
- ③ Pinch centre of separating roller unit and pull it out.
- ④ Replace with new unit.



### 4.2 Maintenance of cutter blades

Although special coating is applied on NSA cutter blade, glue will be built up eventually.

In order to maintain the best cutting condition, remove accumulated glue regularly. Use alcohol for removal. Then use enclosed "silicone oil" for less glue building up.



**Caution**

Pay extra attention when blades are replaced !!

### 4.3 Replacing cutter and cutter liner

Cutter and cutter liner are consuming part.

Regular replacement of cutting head, ( or cutter blades, liners individually ) is required for keep the best cutting condition.

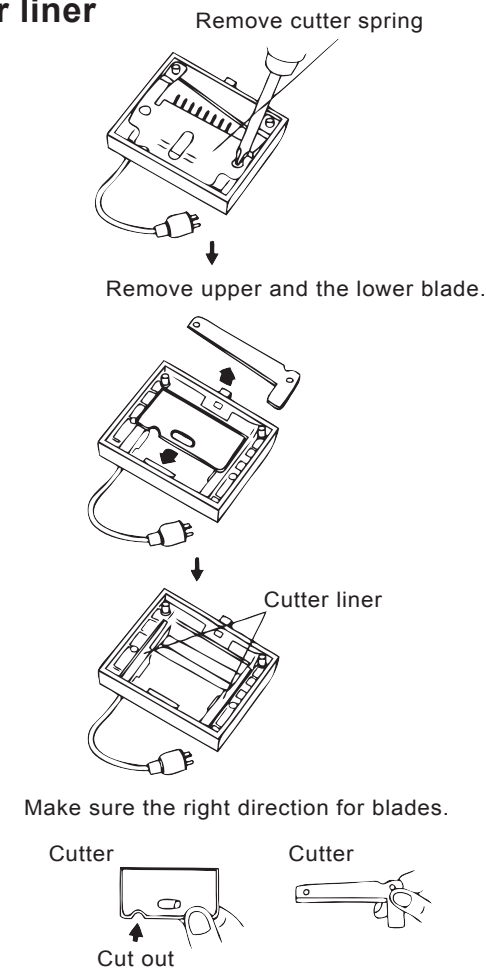
- ① Remove cutting head.
- ② Turn 2 screws and remove "cutter spring".



**Attention**

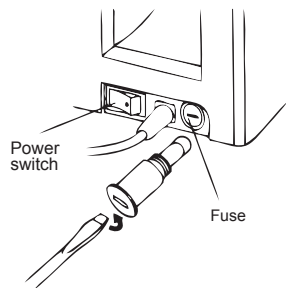
Hold cutter spring when it's unscrewed, for preventing parts popping out.

- ③ Remove cutter blades.
- ④ Make sure the direction and replace " cutter liners " , if those are worn out.
- ⑤ Make sure the direction and replace cutter blades.
- ⑥ Put cutter spring back.
- ⑦ Fastened cutter spring by 2 screws.



4.4 Replacing fuse

- ① Turn main power OFF and pull power cord out.
- ② Turn fuse holder lid to counter clockwise by - screw driver.
- ③ Replace fuse.
- ④ Put fuse holder lid back and turn it to clockwise by - screw driver.



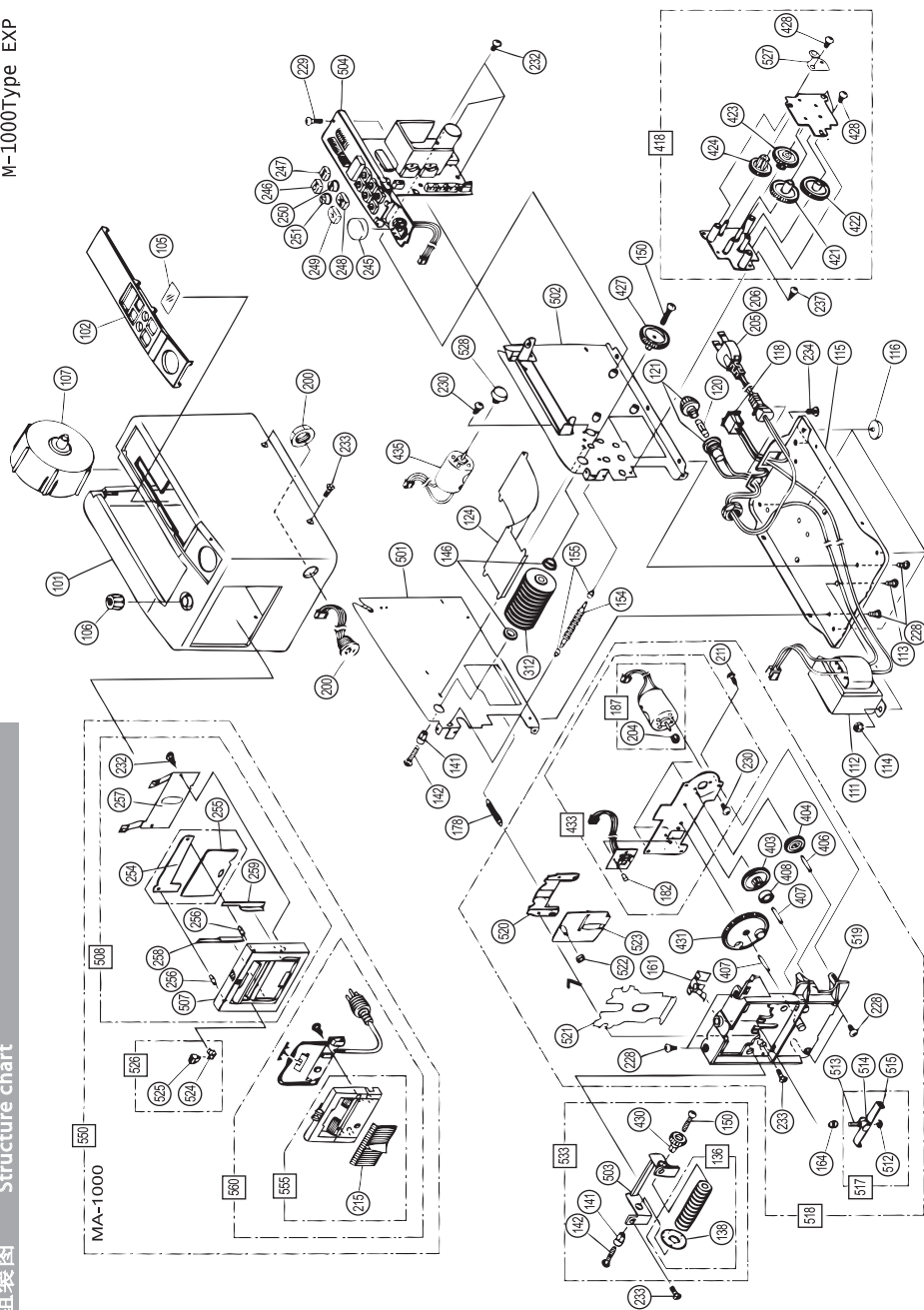
5 Specifications

Model No.	M-1000
Display	3 digits LED
Applicable Tape width	7 - 50mm ※ "Maanetic Tape Guide" as an option is suggested for 7 - 30mm width tape.
Cut length	20 - 999mm
Core (Reel) diameter	3-in-1 reel (25mm, 35mm, 76mm) (1", 1.4", 3")
Max outside Dia. of tape	φ 170mm (Larger reel stand is available as an option parts)
Usable tapes	Cellophane, Kraft, Cloth, PP, Double-sided, Filament, Creped, etc. ※ Following kind of tapes are possibly affect for smooth feeding or cutting: Curls, Strong adhesive, Black color, High transparency, Too thin, Slippery, Generates much static
Drive	DC motor for tape feeding and cut
Power consumption	18W
Power (AC)	220 - 240V 50 / 60Hz
Ambient illumination	Fluorescent: 3,000 lx or less (About 30cm under 40W) Incandescent: 800 lx or less (About 45cm under 60W) Sunlight: 10,000 lx or less (Not to use under direct sun shine)
Ambient Temp and Humidity	5°C - 40°C, 80% RH or less
Size (WxLxH)	137x245x156mm
Weight	About 2.4kg
Cabinet material	ABS plastic

※ Accuracy of cut is about ±2mm (depends on tape).  
※ Specifications are subject to change without notice.

M-1000Type EXP

組裝圖 Structure chart



000306